

Terrian Line Of Sight Analysis



TELOSA

The **TELOSA** software provides critical, timely, and accurate digital and hardcopy geospatial information to support military mission planning and execution.

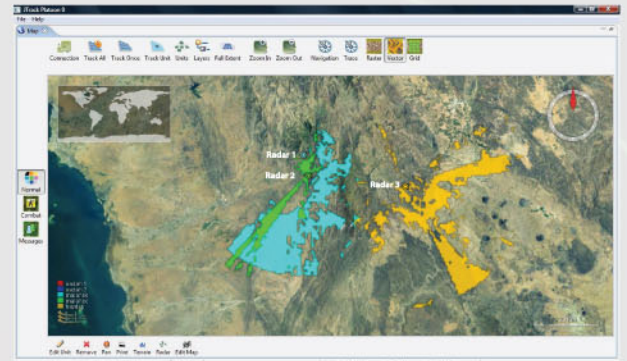
The software boasts superior 3D graphics capabilities, with sophisticated reporting and printing capabilities. It is built upon JelsGIS Toolkit, which is an in-house developed software platform.

The analysis is based on the DEM data of the tested location and the geometric visibility pattern of the sensor or weapon under consideration.

TELOSA Applications

- **Radar :**

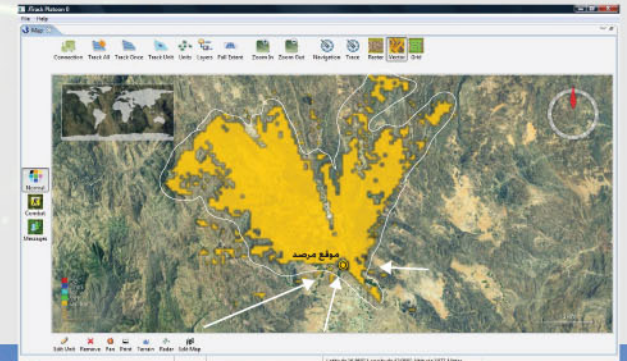
- Radar Coverage for Different Target Altitude.
- Radar Coverage in Different Angles.
- Composite Site Evaluation.
- Radar Best Location.
- Obstacle Range and Bearing.
- Radar Dead Zone.
- Hostile Radar Analysis.



Composite Site Evaluation

- **Air Defense Deployment Analysis :**

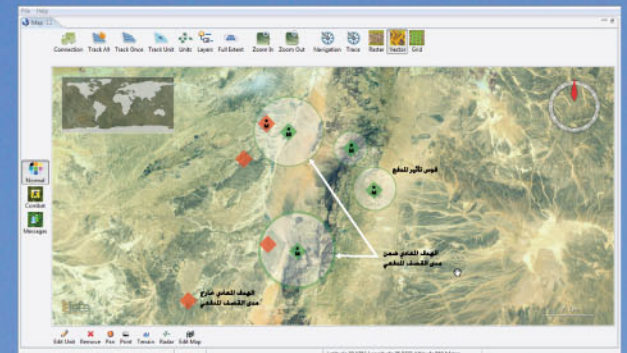
- Optimum Units Distribution.
- Select Best Location for Fire Unit.
- Display Overlap and Mutual Support for AD Units.
- Display Killing Zone for Different Target Altitude.



Select Best Location for Fire Unit

- **Artillery Coverage Analysis:**

- Database Management for all Targets.
- Weapon Fan Line of sight Analysis.
- Forward Observers Graphical Capabilities.
- Best Location of Artillery Elements and Firing Range.



Database Management for all Targets.

- **Special Forces Task Planning:**

- Complex and Rough Terrains Analysis.
- Visibility Analysis.
- Observation and Support Fire Location and Positioning.
- Reporting and Scheduling.



Portable TELOSA Station



Commander TELOSA Station

JORDAN ELECTRONIC LOGISTICS SUPPORT

P.O. Box 926041, Amman 11190, Jordan - Office : +962 6 462 4551 - Fax : +962 6 462 6834 - E-mail : info@jels-tech.com